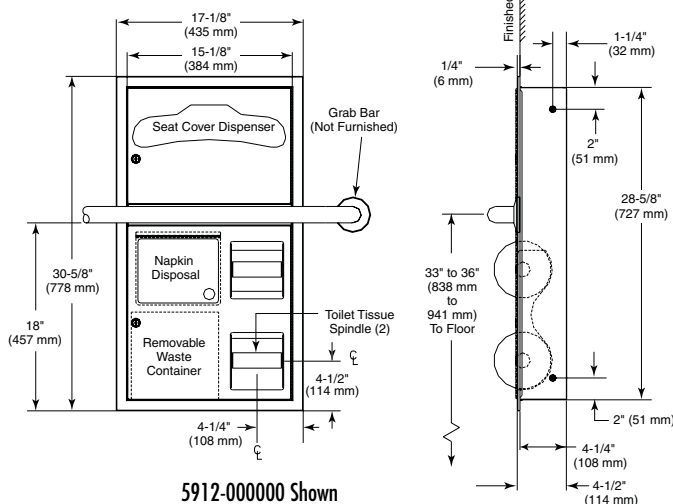


## COMBINATION UNIT

- Recess Mounted – Seat Cover/Tissue Dispenser with Napkin Disposal
- Model 5912 – Recessed **Bradlex**® (shown)
- Model 5912-10 – Semi-recessed (recesses 3-1/4", projects 1-1/4") (Single door: does not allow clearance for grab bar)
- Model 5912-11 – Surface Mounted (projects 4-1/2") (single door: does not allow clearance for grab bar)



5912-000000 Shown

### CONSTRUCTION:

- **FLANGE** fabricated of type 304 (18-8), 22 gauge stainless steel with exposed surfaces in architectural satin finish. Flange of one piece seamless construction, 1" wide with 1/4" return.
- **CABINET** fabricated of type 304 (18-8), 22 gauge stainless steel with exposed surfaces in architectural satin finish. Welded construction with burr-free edges.
- **DOOR** fabricated of type 304 (18-8), 18 gauge stainless steel with full length piano hinge and tumbler lock keyed like other Bradley units.
- **PUSH FLAP DOOR** fabricated of type 304 (18-8), 22 gauge stainless steel with exposed surfaces in architectural satin finish. Self-closing, with heavy duty stainless steel piano hinge.
- **WASTE CONTAINER** fabricated of leakproof molded plastic. 1.0 gal. capacity.
- **SPINDLES** of polyethylene, non-removable by user.

### CAPACITY:

Toilet Seat Cover Dispensers - 1,000 standard single-fold or half-fold toilet seat covers;  
Toilet Tissue Dispensers - two standard core toilet tissue rolls through 5-1/4" in diameter.

### OPERATION:

Hinged access door permits servicing of components from one side.

### INSTALLATION:

Requires rough wall opening 15-3/8"W x 28-7/8"H x 4-1/4"D. Secure with mounting screws (included) at holes provided. Recessed unit allows clearance for grab bar (not included) across front of unit. Surface mounted unit utilizes one piece door; does not allow clearance for grab bar.

### GUIDE SPECIFICATION:

Recessed combination unit shall include toilet seat cover dispenser, toilet tissue dispenser, and napkin disposal, and be fabricated of type 304 (18-8), heavy gauge stainless steel with seamless exposed surfaces in satin finish. Door and back panel shall be 18 gauge. Door shall have piano hinge and tumbler lock.

Overall dimensions: 17-1/8"W x 30-5/8"H x 4-1/2"D.

**Recessed Combination Unit shall be Bradley Model 5912.**

Orders composed of products indicated as **Bradlex**® will be available to ship in one week after receipt of order at the factory. There is no pricing penalty for this service from Bradley.



P.O. Box 309, Menomonee Falls, WI 53052-0309  
Phone 1-800-BRADLEY FAX 262-253-4161  
Web Site: <http://www.bradleycorp.com>

Document No. 8590

This information is subject to change without formal notice.  
© 2007 Bradley Corporation  
4-4-2007