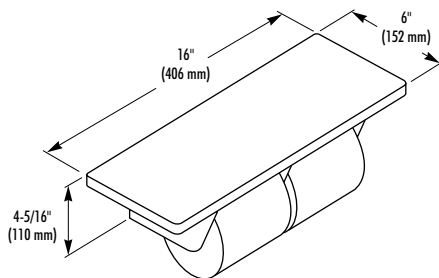
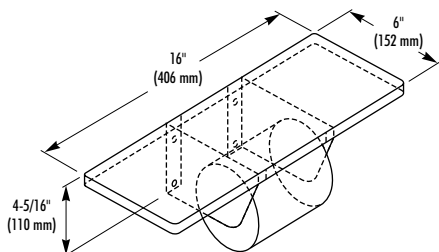


TOILET TISSUE DISPENSER

- Dispenser with Shelf
- Accent Series – Color Laminate
- Specify Color _____
(See color chart in back of catalog)
- Model 5268 – Single Roll
- Model 5269 – Dual Roll



MODEL
5268/5269

CONSTRUCTION:

- **SHELF** fabricated of 5/16" thick solid laminate made of colored Melamine bonded under high pressure to a phenolic core. All exposed edges are machined smooth to a uniform dark finish with rounded corners.
- **TISSUE DISPENSER** fabricated of type 304 (18-8), 18 gauge stainless steel with exposed surfaces in architectural satin finish. Spindle(s) of ABS plastic with concealed spring.

CAPACITY:

One (two) standard core toilet tissue roll(s) through 6" in diameter.

OPERATION:

Spindle(s) easily removed for servicing.

INSTALLATION:

Secure dispenser with mounting screws (included) at holes provided.

OPTIONAL FEATURES:

Feature	Suffix
<input type="checkbox"/> Anti-theft spindle	-52

GUIDE SPECIFICATION:

Toilet tissue dispenser shall be fabricated of type 304 (18-8), 18 gauge stainless steel with satin finish. Shelf fabricated of 5/16" thick solid laminate. Tissue dispenser holds one (two) standard core toilet tissue roll(s).

Overall dimensions: 16"W x 4-5/16"H x 6"D.

Toilet Tissue Dispenser shall be Bradley Model 5268 (5269)-_____(specify Bradley color number).

Document No. 8540

This information is subject to change without formal notice.
1299RSSCJ

Bradley 

P.O. Box 309, Menomonee Falls, WI 53052-0309
Phone 1-800-BRADLEY FAX 262-253-4161
Web Site: <http://www.bradleycorp.com>
Technical Information Fax Service: 1-800-BRADFAX