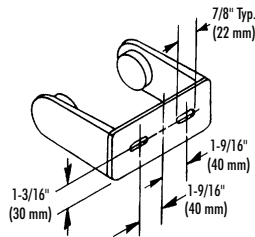
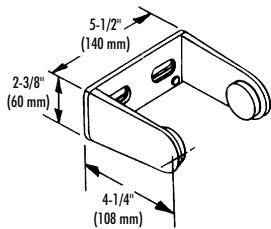
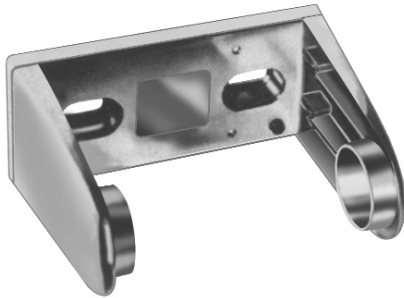


TOILET TISSUE DISPENSER

- Controlled Delivery
- Single Roll (For Dual Roll See Model 522)

Bradex™



CONSTRUCTION:

- UNIT fabricated of die cast zinc. Copper and nickel polished chrome plated finish.

CAPACITY:

One standard core toilet tissue roll through 5" in diameter.

OPERATION:

Push button unlocks support arms to permit servicing of unit. Tension spring on stationary arm controls paper delivery.

INSTALLATION:

Secure to wall with mounting screws (included) at holes provided.

GUIDE SPECIFICATION:

Surface mounted toilet tissue dispenser shall be chrome plated die cast zinc and hold one standard core toilet tissue roll.

Tension spring controls paper delivery.

Overall dimensions: 5-1/2" W x 2-3/8" H x 4-1/4" D.

Surface Mounted Toilet Tissue Dispenser shall be Bradley Model 505.

Document No. 8425

This information is subject to change without formal notice.
1299RSSCJ

Orders composed of products indicated as **Bradex™** will be available to ship in one week after receipt of order at the factory. There is no pricing penalty for this service from Bradley.



P.O. Box 309, Menomonee Falls, WI 53052-0309
Phone 1-800-BRADLEY FAX 262-253-4161
Web Site: <http://www.bradleycorp.com>
Technical Information Fax Service: 1-800-BRADFAX