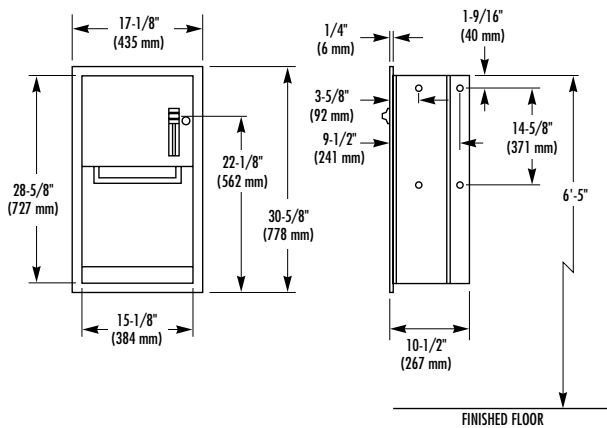


TOWEL DISPENSER

- Model 2481 – Recessed
- Model 2481-10 – Semi-recessed (recesses 3-1/2"; projects 7")
- Model 2481-11 – Surface-Mounted (projects 10-1/2")



CONSTRUCTION:

- **FLANGE** fabricated of type 304 (18-8), 22 gauge stainless steel with exposed surfaces in architectural satin finish. One-piece seamless construction, 1" wide with 1/4" return.
- **CABINET** fabricated of type 304 (18-8), heavy gauge stainless steel. All welded construction.
- **DOOR** fabricated of type 304 (18-8), 18 gauge stainless steel with full length piano hinge and tumbler lock keyed like other Bradley units.
- **TOWEL DISPENSER** furnished (manufactured by others.)

CAPACITY:

One standard core 8" or 9"W x 800'L roll paper towels.

OPERATION:

Operates with less than 5 lbs. of force. Towel dispenser delivers preset length of towel (2-1/2", 4" or 5" per stroke.)

INSTALLATION:

Recessed unit requires rough wall opening 15-1/2" W x 29-1/2"H x 10-1/2"D (Semi-recessed unit only 3-1/2" deep). Top of wall opening 6'-5" above finished floor. Secure to framing with mounting screws (included) at holes provided. Shim at screw points as required.

GUIDE SPECIFICATION:

Recessed roll towel dispenser shall be fabricated of type 304 (18-8), stainless steel with exposed surfaces in satin finish. Cabinet door has full length piano hinge and is secured by tumbler lock. Towel dispenser capacity one standard core 8" or 9" W x 800' L roll paper towel.

Overall dimensions: 17-1/8"W x 30-5/8"H x 10-1/2"D.

Recessed Roll Towel Cabinet shall be Bradley Model 2481.

Document No. 8190

This information is subject to change without formal notice.
© 2007 Bradley Corporation
3-28-2007



P.O. Box 309, Menomonee Falls, WI 53052-0309
Phone 1-800-BRADLEY FAX 262-253-4161
Web Site: <http://www.bradleycorp.com>